

# CERTIFICATE OF LOCATION OF GOVERNMENT CORNER

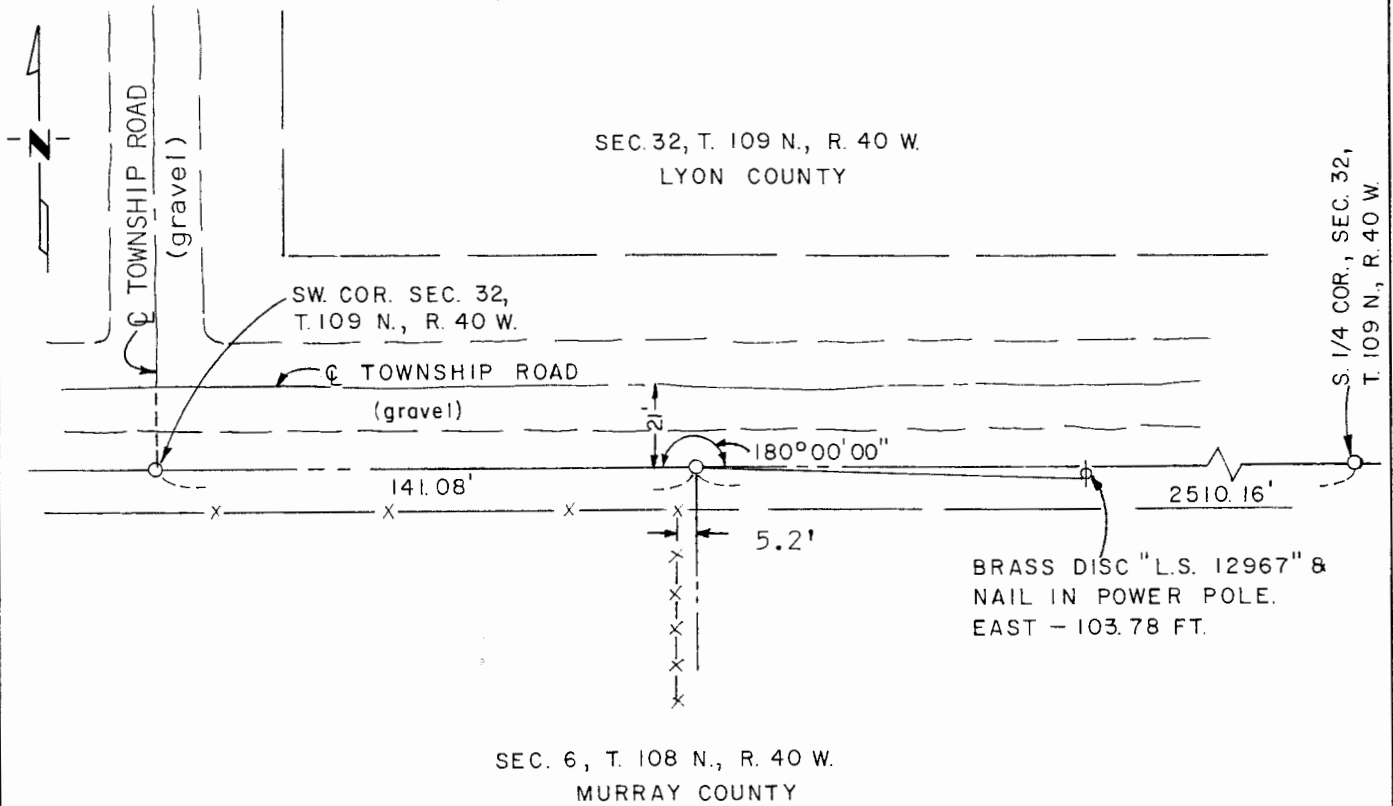
North Quarter Corner of Section 6, Township 108 N., Range 40 W., 5th P.M.

STATE OF MINNESOTA, County of Murray

At the corner location shown on the sketch:

- On \_\_\_\_\_ found a \_\_\_\_\_  
DATE
- left monument as found,  lowered monument,  removed monument (explain)
- On Oct. 7, 1980 placed a 1/2" iron reinforcing bar with "L.S. 12967" cap  
DATE

### SKETCH OF REFERENCE TIES



I hereby certify that this document and the data contained herein was prepared by me or under my direct supervision.

[Signature] SIGNATURE      12/28/81 DATE

Registration No. 12967

- Land Surveyor,  Professional Engineer
- County Surveyor,  County Engineer

### OFFICE OF THE COUNTY RECORDER

County of Murray

I hereby certify that this document was filed in the Co. Recorders office at 10 A.M. on the 18th day of February A.D., 1982

County Recorder Willard W. Orme

By \_\_\_\_\_, Deputy

DOCUMENT NO. \_\_\_\_\_